

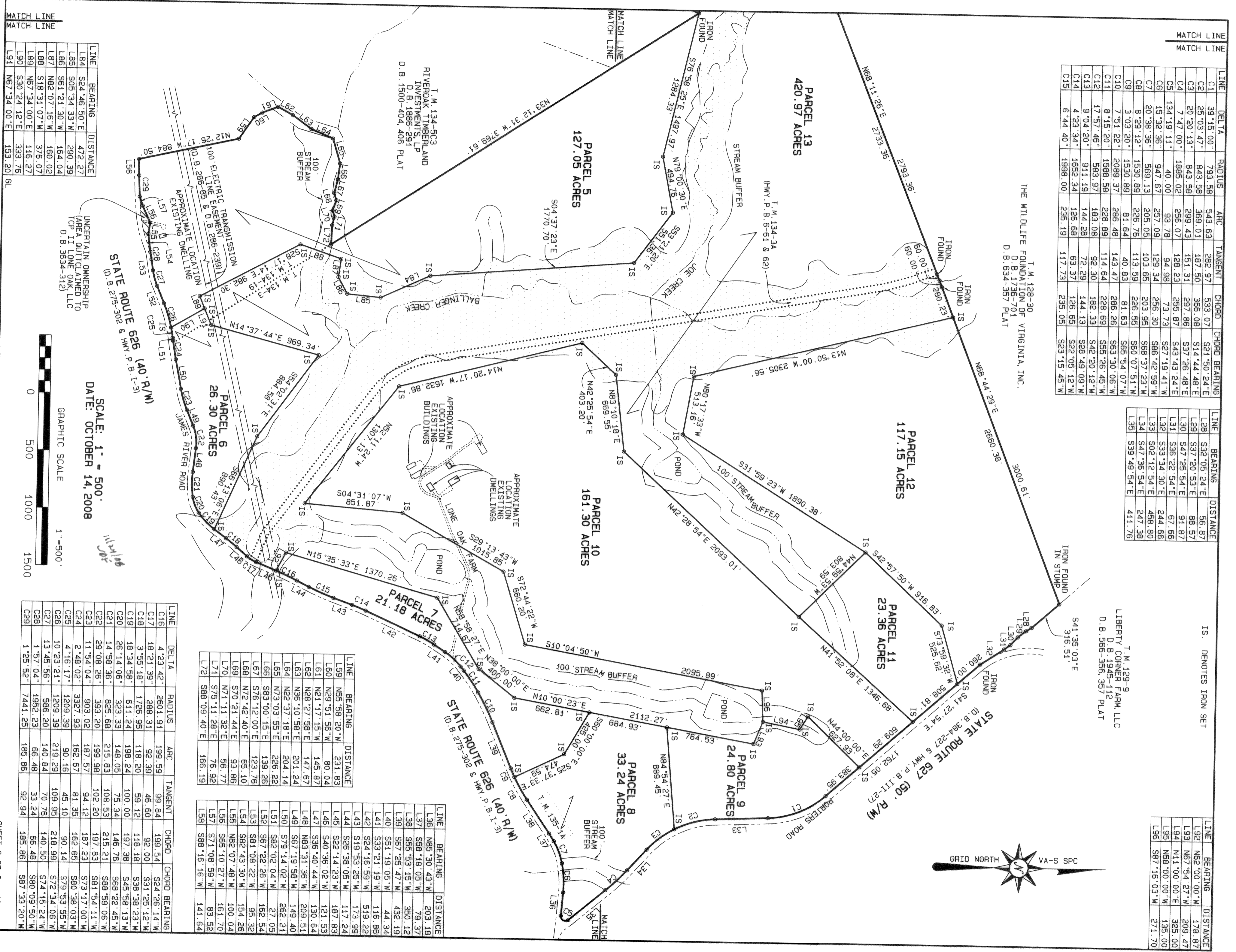
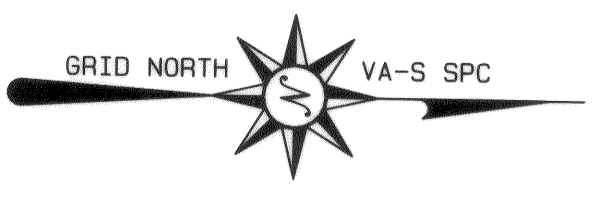
LINE	DELTA	RADIUS	ARC	TANGENT	CHORD	CHORD BEARING
C1	39°15'00"	793.58	543.63	282.97	533.07	S21°50'24"E
C2	25°03'47"	843.58	369.01	187.50	366.08	S14°44'48"E
C3	20°20'13"	843.58	299.43	151.31	287.86	S37°26'48"E
C4	7°47'00"	1885.02	256.07	128.23	295.87	S43°43'24"E
C5	134°19'11"	40.00	93.78	94.98	73.73	S27°19'41"W
C6	15°32'36"	947.67	257.09	129.34	256.30	S68°42'59"W
C7	20°38'36"	569.13	205.05	103.95	203.95	S68°37'23"W
C8	8°29'12"	1530.89	226.76	113.59	226.55	S60°07'51"W
C9	3°03'20"	1530.89	226.76	113.59	226.55	S65°54'07"W
C10	7°51'22"	2089.37	286.48	143.47	286.26	S63°30'06"W
C11	8°15'20"	1588.58	228.89	114.64	228.69	S55°26'45"W
C12	17°57'46"	583.97	183.08	92.30	182.33	S42°20'12"W
C13	9°04'20"	911.19	144.28	72.29	144.13	S28°49'09"W
C14	4°23'34"	1652.34	126.68	63.37	126.65	S22°05'12"W
C15	6°44'40"	1998.00	235.19	117.73	235.05	S23°15'45"W

LINE	BEARING	DISTANCE
L28	S32°05'24"E	56.87
L29	S37°20'53"E	88.57
L30	S47°25'54"E	91.87
L31	S36°22'54"E	67.66
L32	S33°34'30"E	244.66
L33	S02°12'54"E	458.80
L34	S47°36'54"E	247.38
L35	S39°49'54"E	411.76

LINE	BEARING	DISTANCE
L92	N62°00'00"W	178.87
L93	N67°54'27"W	209.47
L94	N11°00'00"E	325.00
L95	N66°00'00"W	135.00
L96	S87°16'03"W	271.70

T.M. 128-30  
 THE WILDLIFE FOUNDATION OF VIRGINIA, INC.  
 D.B. 1736-701  
 D.B. 634-357 PLAT

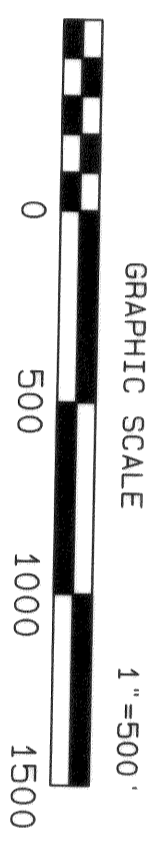
T.M. 129-9  
 LIBERTY CORNER FARM, LLC  
 D.B. 1945-112  
 D.B. 566-356, 357 PLAT



LINE	BEARING	DISTANCE
L84	S24°46'50"E	472.27
L85	S05°34'33"W	290.39
L86	N82°07'16"W	164.04
L87	N82°07'16"W	160.02
L88	S18°31'07"W	376.07
L89	N67°34'00"E	116.27
L90	S30°24'12"E	333.76
L91	N67°34'00"E	153.20

STATE ROUTE 626 (40' R/W)  
 (D.B. 275-302 & HWY. P.B. 1-3)

SCALE: 1" = 500'  
 DATE: OCTOBER 14, 2008



LINE	BEARING	DISTANCE
L59	N55°58'20"W	231.83
L60	N29°51'56"W	80.04
L61	N21°17'15"W	145.87
L62	N28°27'58"E	147.67
L63	N36°10'58"E	201.24
L64	N22°37'18"E	204.14
L65	N73°03'55"E	226.22
L66	S83°00'15"E	139.26
L67	S76°12'00"E	123.76
L68	N72°42'40"E	65.10
L69	S70°21'44"E	93.86
L70	N71°11'32"E	56.77
L71	S75°11'28"E	76.92
L72	S88°09'40"E	166.19

LINE	BEARING	DISTANCE
L36	N85°30'43"W	203.18
L37	S58°18'05"W	79.37
L38	S55°53'15"W	350.12
L39	S67°25'47"W	432.19
L40	S51°19'05"W	44.34
L41	S33°21'19"W	116.86
L42	S24°16'59"W	519.22
L43	S19°53'28"W	173.99
L44	S26°38'05"W	117.24
L45	S22°14'23"W	187.83
L46	S40°36'02"W	121.53
L47	S36°40'44"W	130.64
L48	N83°31'36"W	209.51
L49	S67°19'58"W	149.40
L50	S79°14'02"W	262.21
L51	S82°02'04"W	27.05
L52	S67°22'26"W	162.54
L53	S81°08'22"W	96.32
L54	S82°43'30"W	154.26
L55	N82°07'48"W	100.04
L56	S65°10'27"W	161.70
L57	S71°08'59"W	83.52
L58	S88°16'16"W	141.64

LINE	DELTA	RADIUS	ARC	TANGENT	CHORD	CHORD BEARING
C16	4°23'42"	2601.91	199.59	99.84	199.54	S24°26'14"W
C17	18°21'39"	288.31	92.39	46.60	92.00	S31°25'12"W
C18	3°55'18"	1726.95	118.20	59.12	118.18	S38°38'23"W
C19	18°34'58"	611.24	198.24	100.00	197.38	S45°58'13"W
C20	26°14'06"	323.33	148.05	75.34	146.76	S68°22'45"W
C21	14°58'36"	825.68	215.83	108.53	215.21	S88°59'06"W
C22	29°08'26"	393.26	199.98	102.20	197.83	S81°54'11"W
C23	11°54'04"	903.02	187.57	94.12	187.23	S73°17'00"W
C24	2°46'02"	3327.93	162.67	81.35	162.65	S80°38'03"W
C25	4°16'11"	1209.39	90.16	45.10	90.14	S79°53'55"W
C26	10°23'21"	1209.39	219.29	109.95	218.99	S74°15'24"W
C27	13°45'56"	586.20	140.84	70.76	140.50	S74°15'24"W
C28	1°57°04"	1952.23	66.48	33.24	66.48	S80°09'50"W
C29	1°25'52"	7441.25	185.86	92.94	185.86	S87°33'20"W