

G.M. DAVIS
 D.B. 100 P. 481A
 T.M. NO. 125-9

C. DOUGLAS BRANCH &
 ROBIN M. BRANCH
 D.B. 254 P. 771
 T.M. NO. 125-29A

STATE ROUTE NO. 1017
 CORRECTIONAL CTR RD.
 50 ft. R/W

0.15 mi. to
 Rte. # 1010

BOBBY D. &
 JUDI S. ALLEN
 D.B. 66 P. 503
 T.M. NO. 125-21

RAM
 30 SLIDE 92E
 25-3-2
 on @ 567.60'
) &
 GOIN
 2,935
 2-A SLIDE 92E
 125-3-3
 fd. iron @ 302.47'
 fd. iron @ 761.74'
 CENTRAL VA. AUTO
 ASSOCIATES INC.
 D.B. 129 P. 295
 Plat: P.C.A SLIDE 16
 T.M. NO. 125-2-2C
 fd. iron @ 0.40'

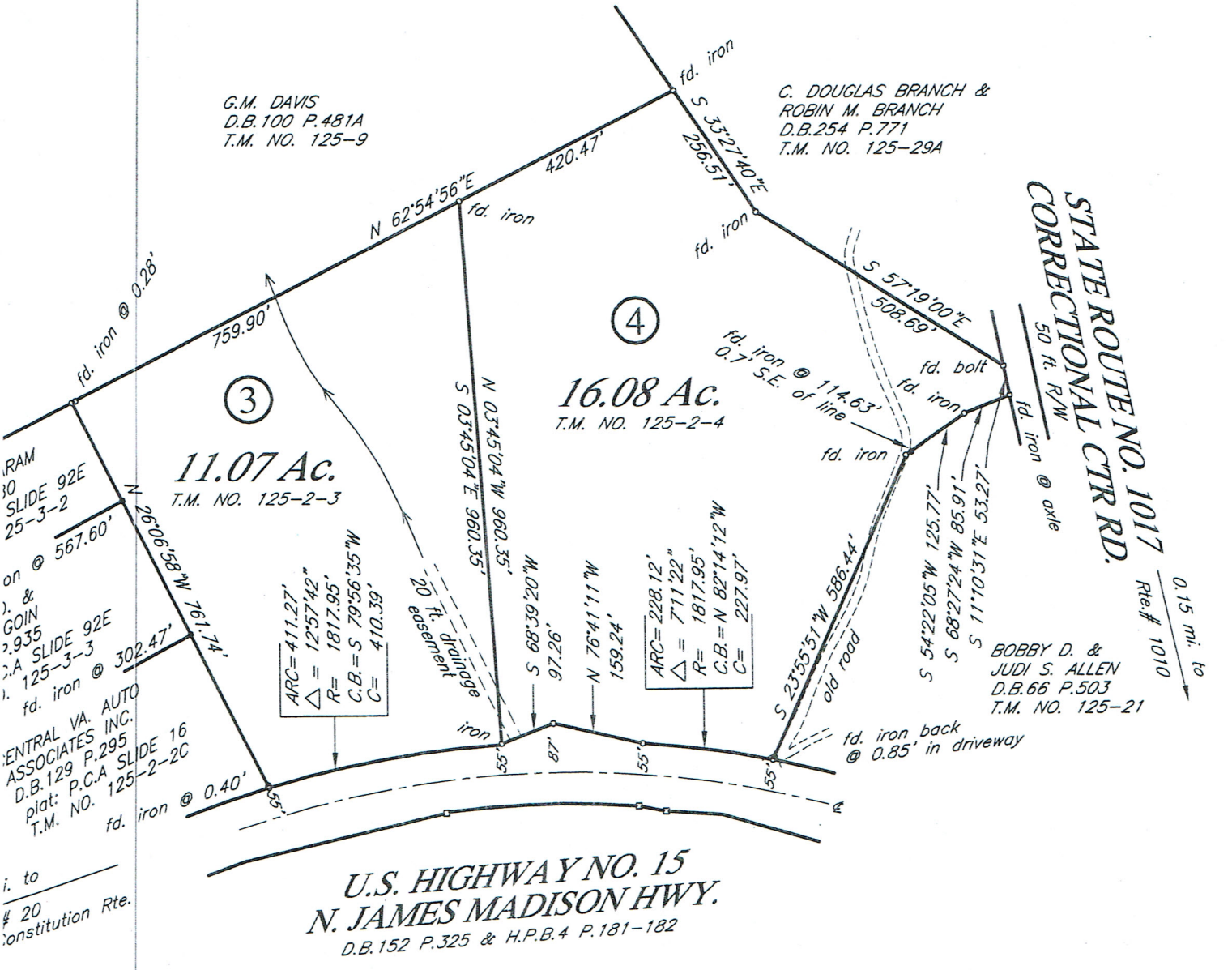
i. to
 # 20
 Constitution Rte.

③
11.07 Ac.
 T.M. NO. 125-2-3

④
16.08 Ac.
 T.M. NO. 125-2-4

ARC= 411.27'
 $\Delta = 1257.42''$
 R= 1817.95'
 C.B.= S 79°56'35" W
 C= 410.39'

ARC= 228.12'
 $\Delta = 711.22''$
 R= 1817.95'
 C.B.= N 82°14'12" W
 C= 227.97'



U.S. HIGHWAY NO. 15
N. JAMES MADISON HWY.
 D.B. 152 P. 325 & H.P.B. 4 P. 181-182

D.A.S.