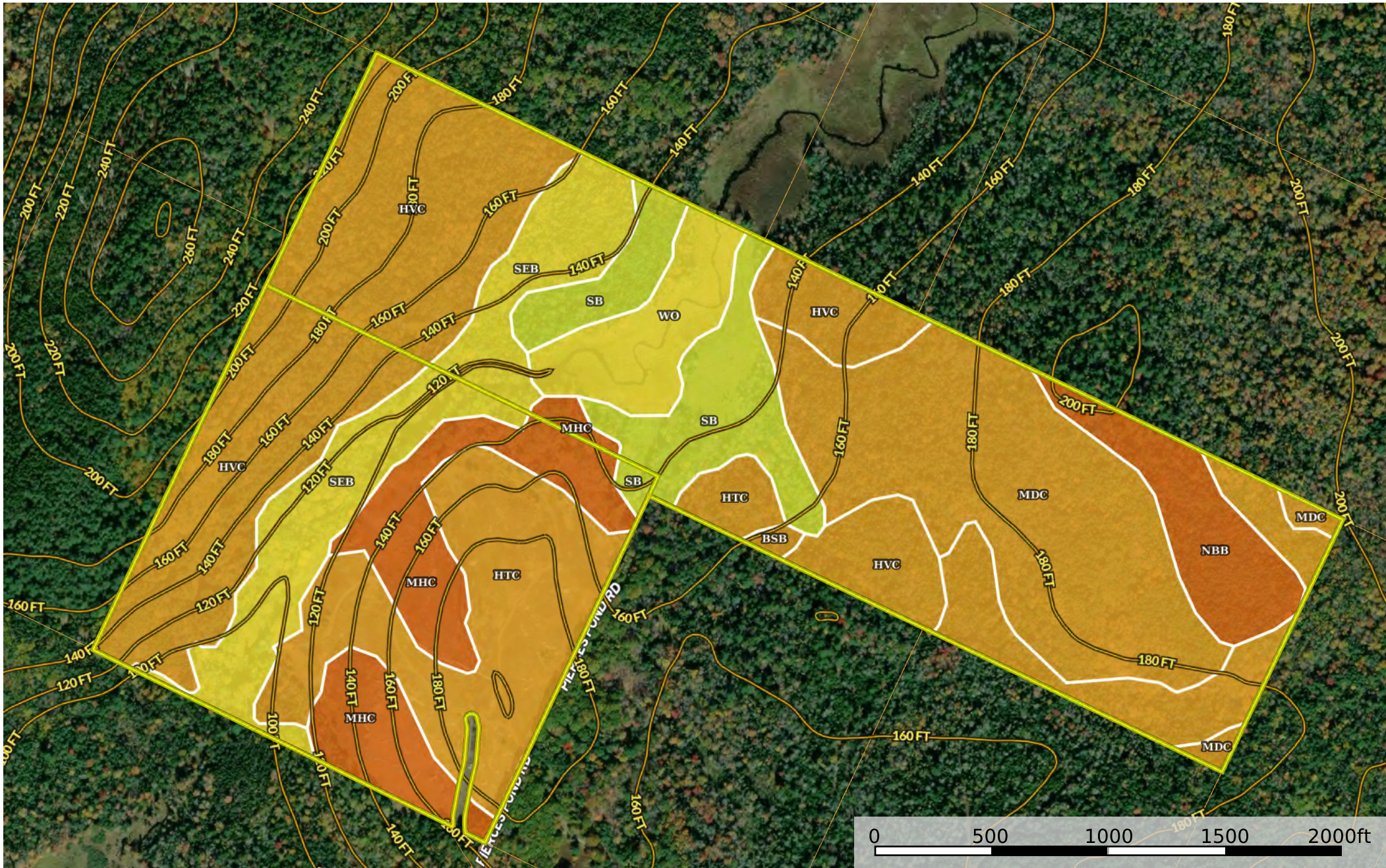



Allen Blueberry Parcel

Maine, AC +/-



 Boundary

George MacLeod

 The information contained herein was obtained from sources deemed to be reliable. Land id™ Services makes no warranties or guarantees as to the completeness or accuracy thereof.

 All Polygons 195.22 ac

SOIL CODE	SOIL DESCRIPTION	ACRES	%	CPI	NCCPI	CAP
HVC	Hermon-Monadnock-Peru complex, 8 to 15 percent slopes, very stony	51.89	26.58	0	35	6s
MDC	Marlow-Peru association, 3 to 15 percent slopes, very stony	35.34	18.1	0	38	6s
HtC	Hermon and Monadnock soils, 8 to 15 percent slopes, very stony	26.0	13.32	0	36	6s
SEB	Scantic-Lamoine-Peru complex, 0 to 8 percent slopes, very stony	20.78	10.64	0	45	5w
MhC	Monadnock-Hermon complex, 3 to 15 percent slopes, extremely bouldery	17.73	9.08	0	32	7s
SB	Scantic-Biddeford complex, 0 to 3 percent slopes	15.16	7.77	0	50	4w
BSB	Brayton-Colonel association, 0 to 8 percent slopes, very stony	10.97	5.62	0	30	6s
NBB	Naskeag-Schoodic-Lyman complex, 0 to 8 percent slopes, rocky	9	4.61	0	21	7s
Wo	Wonsqueak muck, 0 to 2 percent slopes, frequently flooded	8.35	4.28	0	17	5w
TOTALS		195.2 2(*)	100%	-	35.93	5.83

(*) Total acres may differ in the second decimal compared to the sum of each acreage soil. This is due to a round error because we only show the acres of each soil with two decimal.

 Boundary 121.81 ac

SOIL CODE	SOIL DESCRIPTION	ACRES	%	CPI	NCCPI	CAP
MDC	Marlow-Peru association, 3 to 15 percent slopes, very stony	35.34	29.01	0	38	6s
HVC	Hermon-Monadnock-Peru complex, 8 to 15 percent slopes, very stony	31.91	26.2	0	35	6s
SB	Scantic-Biddeford complex, 0 to 3 percent slopes	14.56	11.95	0	50	4w
BSB	Brayton-Colonel association, 0 to 8 percent slopes, very stony	10.97	9.01	0	30	6s
NBB	Naskeag-Schoodic-Lyman complex, 0 to 8 percent slopes, rocky	9	7.39	0	21	7s
Wo	Wonsqueak muck, 0 to 2 percent slopes, frequently flooded	8.35	6.85	0	17	5w
SEB	Scantic-Lamoine-Peru complex, 0 to 8 percent slopes, very stony	8.32	6.83	0	45	5w
HtC	Hermon and Monadnock soils, 8 to 15 percent slopes, very stony	2.47	2.03	0	36	6s
MhC	Monadnock-Hermon complex, 3 to 15 percent slopes, extremely bouldery	0.89	0.73	0	32	7s
TOTALS		121.8 1(*)	100%	-	35.63	5.71

(*) Total acres may differ in the second decimal compared to the sum of each acreage soil. This is due to a round error because we only show the acres of each soil with two decimal.

 Boundary 73.41 ac

SOIL CODE	SOIL DESCRIPTION	ACRES	%	CPI	NCCPI	CAP
HtC	Hermon and Monadnock soils, 8 to 15 percent slopes, very stony	23.53	32.05	0	36	6s
HVC	Hermon-Monadnock-Peru complex, 8 to 15 percent slopes, very stony	19.98	27.21	0	35	6s

MhC	Monadnock-Hermon complex, 3 to 15 percent slopes, extremely bouldery	16.84	22.94	0	32	7s
SEB	Scantic-Lamoine-Peru complex, 0 to 8 percent slopes, very stony	12.46	16.97	0	45	5w
SB	Scantic-Biddeford complex, 0 to 3 percent slopes	0.6	0.82	0	50	4w
TOTALS		73.41(*)	100%	-	36.45	6.04

(*) Total acres may differ in the second decimal compared to the sum of each acreage soil. This is due to a round error because we only show the acres of each soil with two decimal.

