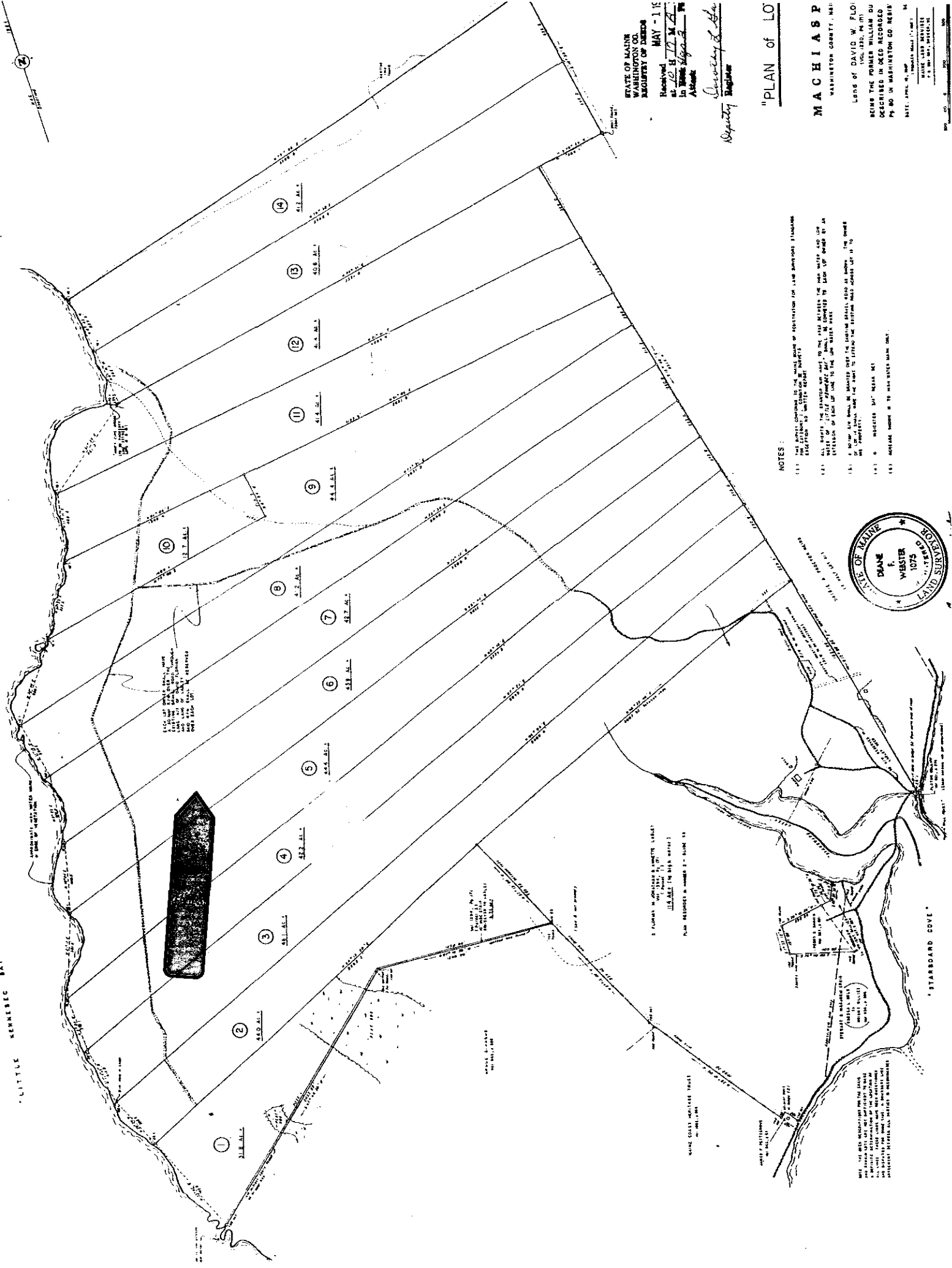


LITTLE KENNEBEC BAY



STATE OF MAINE
WASHINGTON CO.
RECORDER OF DEEDS

Received MAY - 1 1915
at 12:12 P.M.
in Book 124, Page 78

Quincy & Co.
Supts.

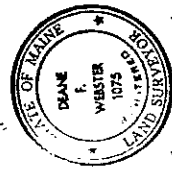
"PLAN of LO"

M A C H I A S P
WASHINGTON COUNTY, MAINE

LAND of DAVID W. FLO
VOL. 122, P. 111

BEING THE PORTER WILLIAM DU
DESCRIBED IN DEED RECORDED
IN BOOK 124 IN WASHINGTON CO. DEEDS
DATE, APRIL 9, 1914

- NOTES:
- (1) The survey contained in this plan shows the location of the lots and the location of the water frontage.
 - (2) The survey was made on the 11th day of May, 1915, and the water level was at high tide.
 - (3) The survey was made on the 11th day of May, 1915, and the water level was at high tide.
 - (4) The survey was made on the 11th day of May, 1915, and the water level was at high tide.
 - (5) The survey was made on the 11th day of May, 1915, and the water level was at high tide.
 - (6) The survey was made on the 11th day of May, 1915, and the water level was at high tide.
 - (7) The survey was made on the 11th day of May, 1915, and the water level was at high tide.
 - (8) The survey was made on the 11th day of May, 1915, and the water level was at high tide.
 - (9) The survey was made on the 11th day of May, 1915, and the water level was at high tide.
 - (10) The survey was made on the 11th day of May, 1915, and the water level was at high tide.
 - (11) The survey was made on the 11th day of May, 1915, and the water level was at high tide.
 - (12) The survey was made on the 11th day of May, 1915, and the water level was at high tide.
 - (13) The survey was made on the 11th day of May, 1915, and the water level was at high tide.



1. PLAN of LO
MAINE COAST AND TIDE TRAIL
PLAN RECORDED IN BOOK 124, PAGE 78

NOTE: THE SURVEY WAS MADE ON THE 11TH DAY OF MAY, 1915, AND THE WATER LEVEL WAS AT HIGH TIDE.